

CopperStone

Chartered Building Company

CONSTRUCTION
RESTORATION
REFURBISHMENT

experienced

CopperStone Projects deliver quality building services to Central London, delivering projects on time and on budget. Our experience includes fit out, cut and carve, specialist works and project management.



transparent

CopperStone is a secular, customer focused organisation. We respect the rights and beliefs of our associates, customers, suppliers and community. We promote and support a diverse and unified team, with dignity, equality and trust at the core of our values. Working to the highest ethical standards, CopperStone demonstrates fairness in every action we take.

safety

CopperStone and its partners recognise the responsibility for all staff, sub-contractors, clients and the Public's safety lies with us as a Contractor.

Our systems on site and in the office, show that Safety is at the forefront of all our processes and we will only ever work, when it is safe to do so.



CopperStone Projects Ltd

Tintagel House, 92 Albert Embankment
Vauxhall, London SE1 7TY

0207 725 1332 | info@copperstone.uk | www.copperstone.uk

 [alex-hennessy-copperstone](https://www.linkedin.com/company/alex-hennessy-copperstone)

 [copperstoneuk](https://www.instagram.com/copperstoneuk)



Purcell Architects asked CopperStone to work closely with them on this Church which is a Grade II listed building.

The Church had a vacant plot to the side which was to be turned into a contemporary, practical space for the Church and Local Community to use.

Administered under a traditional JCT Contract, we worked closely with the client and Purcell Architects making sure all budgets were met without compromising the quality and look of the Grade II Church plot to the side.

CopperStone drew on their experienced supply chain to procure & fit all elements of the build from construction, fit out, M&E and the finishes.



Of the four contractors who Tendered for the work, Alex and Co were by far the most engaged and constructive. Alex's attention to detail and the efforts he and his team put in to sourcing and managing subcontractors were utterly instrumental in bringing this complex and sophisticated job in, on time, on budget, and precisely in accordance with the contract documents.

Michael Walsh, Purcell Architects



CopperStone Projects Ltd

Tintagel House, 92 Albert Embankment
Vauxhall, London SE1 7TY

0207 725 1332 | info@copperstone.uk | www.copperstone.uk

 [alex-hennessy-copperstone](https://www.linkedin.com/company/alex-hennessy-copperstone)

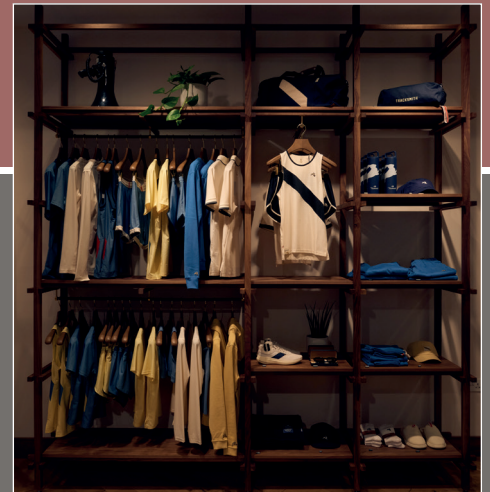
 [copperstoneuk](https://www.instagram.com/copperstoneuk)

Tracksmith London



CopperStone undertook this 2 stage project for our Chicago based Clients.

The Trackhouse was designed as a manifestation of the Tracksmith brand, fused with the elevated culture of London's Marylebone Neighbourhood. The store is centred around a best-in-class retail district, while also being on the doorstep of some of London's finest green spaces. Creatively designed with elements that make the space unique, it features a terrazzo running track inlaid in the floor to guide the customer experience, as well as distinguished finishings throughout made from walnut, brass, and oak.



CopperStone Projects Ltd

Tintagel House, 92 Albert Embankment

Vauxhall, London SE1 7TY

0207 725 1332 | info@copperstone.uk | www.copperstone.uk

alex-hennessy-copperstone

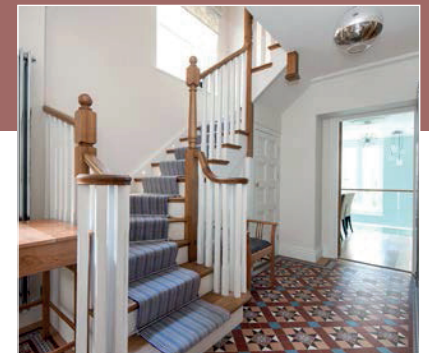
copperstoneuk



Crowther Associates and CopperStone worked closely together on this 5 storey end of terrace. The original building had been converted to office suites, we returned the house back into its original use, a residential single town house.

The property is located in the Birdcage walk conservation area in Westminster. To take back to its original use we needed to strip out from basement up to roof. We went back to the bare structure and then considerably restored, reinstating some original features, whilst incorporating high levels of fabric insulation and modern technologies such as a full house ventilation system.

The basement kitchen and ground floor dining area were linked together via a new double height space, incorporating a glass floor and a floating staircase linking them, all in a contemporary style, compared to the rest of the house but still blending seamlessly the old and new styles. This new double height space opens out on to a newly formed private sunken garden at the rear of the property.



CopperStone Projects Ltd

Tintagel House, 92 Albert Embankment
Vauxhall, London SE1 7TY

0207 725 1332 | info@copperstone.uk | www.copperstone.uk

[alex-hennessy-copperstone](https://www.linkedin.com/company/alex-hennessy-copperstone)

[copperstoneuk](https://www.instagram.com/copperstoneuk)